

Students in Home Schools

Children in home school programs in Albemarle County are considered to be “placed by their parents in private schools”. Parents of children in home school programs are entitled to the same communication, child find activities and special services provided to students in private schools as described in this brochure.

What do I do if I suspect a child has a disability...



**In Albemarle County,
call (434)296-5885.**

Ask to talk with the Division School Based Intervention Team Chairperson. The Chairperson will listen to your concerns, share with you the process and work with you to determine the next appropriate steps.

For more information visit:

www.k12albemarle.org/SpecialEducation/home.html

Albemarle County
Department of Special Services
401 McIntire Rd. - Room 323
Charlottesville, VA 22902-4596

*Albemarle County
Public Schools*



Students with Disabilities in Private Schools:

***Child Find,
Special Education
Evaluations and
Eligibility***

***Albemarle County
Public Schools***

*Department of Special Services
401 McIntire Rd. - Room 323
Charlottesville, VA 22902-4596*

*Phone: 434-296-5885
Fax: 434-972-4157*

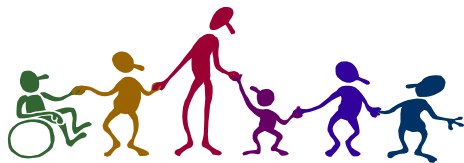


The Law

The reauthorized *Individuals with Disabilities Education Act (IDEA)* was signed into law on Dec. 3, 2004, by President George W. Bush.

The law has changed. The most significant change for students with disabilities enrolled in private schools by their parents is that ***the school division in which the private school is located is responsible for child find activities and the provision of special services to eligible students.***

What has not changed is Albemarle County Public School's belief that children with disabilities should not be excluded from special education evaluations or services if their parents have chosen to place them in a private school.



Child Find

Child Find means activities conducted by Albemarle County Public Schools to identify children with disabilities attending private schools who are in need of special education and related services. These activities are aimed at identifying, locating, and evaluating students with disabilities. The activities also include developing and implementing a practical method to determine which children with disabilities are currently receiving special education and related services in the private school setting.

Albemarle County Schools is responsible for conducting a thorough and complete child find process to determine the number of parentally placed children with disabilities attending private schools located in Albemarle County.

Special Education Evaluations

All students, aged 2 – 21, inclusive, whether enrolled in public school or not, who are suspected of having a disability, shall be referred to the special education administrator or designee who may initiate the process of determining eligibility for special education and related services. Anyone can request an initial evaluation for a student suspected of having a disability. To make a referral as a source outside of the public school, contact the Albemarle County's Department of Special Education and Student Services at (434) 296-5885. Ask to speak to an administrator to make your request. The administrator will request a review by the School Based Intervention Team to decide whether an evaluation should be completed or not. The request for review will occur within 5 business days of the receipt of the request for an evaluation. The decision about whether to evaluate shall be made within 10 business days of the request for review. The referring party and parent will be invited to the meeting.

It is important to note that special education evaluations are based on the suspicion of a disability. A request for testing for the purposes of "exploring concerns" or as a way to provide helpful information to the child's teacher regarding the child's learning style is inappropriate. An evaluation would only be conducted if the child is suspected of being a child with a disability.

The term "**child with a disability**" means a child "with mental retardation, hearing impairments (including deafness), speech or language impairments, visual impairments (including blindness), serious emotional disturbance, orthopedic impairments, autism, traumatic brain injury, other health impairments, or specific learning disabilities; and who, by reason thereof, needs special education and related services.



Special education is defined as specially designed instruction to meet the unique needs of the student with a disability so that they can "meet the standards that apply to all children". The standards that apply to all children are the Standards of Learning and **NOT** the expectations of advanced or honors level classes or curriculum.

Eligibility for Special Education Services

If a School Based Intervention Team suspects a disability and recommends a special education evaluation, parent permission is secured for testing. The assessments needed to determine if the student is a child with a disability, are chosen with the parent. Parental permission to conduct the assessments are secured from the parents prior to conducting any evaluation.

A multidisciplinary team of professionals, including the parents of the child, make up the eligibility team. The special education eligibility team determines whether the child, based on a



disability, requires special services to access the general curriculum so that they can meet the standards that apply to all children in Albemarle County

Schools. Basically, the team determines eligibility based upon evidence that the child has a disability, that the child's disability impairs the student academic performance so much that the student performs below the average student, and that the disability warrants special education services.